

Universal Acrylic Adhesive

UZIN KE 2000 S

Universal Adhesive for all common floor coverings

MAIN APPLICATION FIELD:

- ▶ floor coverings free of PVC and plasticizers (e.g. Amtico Cirro, Haro Disano, Tarkett IQ One)
- ▶ enomer floor coverings (e.g. Upofloor® Xpression oder Upofloor® Zero)
- ▶ PUR floor coverings (e.g. Wineo Purline)
- ▶ textile floor coverings with all common backings
- ▶ light weight needle punch or woven carpet
- ▶ luxury vinyl tiles or design floors
- ▶ linoleum in sheets up to 3.2 mm

SUITABLE ON / FOR:

- ▶ absorbent and levelled substrates
- ▶ dense, non absorbent substrates with the double-drop method (only PVC, CV and rubber)
- ▶ warm water underfloor heating systems
- ▶ exposure to castor wheels in accordance with DIN EN 12 529
- ▶ for wet shampooing and spray extraction cleaning according to RAL 991 A2
- ▶ normal wear in residential, commercial and industrial locations



PRODUCT BENEFITS/FEATURES:

UZIN KE 2000 S is a strong dispersion adhesive with short waiting time and long working time. It can be used as a wet-set adhesive and via the double drop method. For use on floors and walls. For interior use.

- ▶ short waiting time
- ▶ excellent application properties
- ▶ good grab with stringing

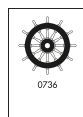


TECHNICAL DATA:

Packaging	plastic bucket
Pack size	14 kg
Shelf life	min. 12 months
Colour, wet	cream white
Colour, dry	transparent
Consumption	180 - 380 g/m ²
Open time	10 - 45 minutes*
Working time	15 - 120 minutes*
Minimum application temperature	15 °C at ground level
Loadable	after 24 hours*
Joint sealing	after 24 hours*
Final strength	after 3 days*

*At 20 °C and 65% relative humidity, depending on the type of floor covering and the absorbency of the substrate.

**Max. acceptable consumption for shipbuilding (IMO): 320 g/m²



SUBSTRATE PREPARATION:

The substrate must be sound, load-bearing, dry, free from cracks and materials (dirt, oil, grease) that would impair adhesion. The surface must be vacuumed, primed and smoothed. Suitable primers and compounds can be found in the UZIN Product Guide. Test the substrate in accordance with applicable standard or notices and report any deficiencies. Allow the primer and levelling compound to dry completely.

The datasheets for other used products have to be observed.

APPLICATION:

1. Apply an event coat of adhesive onto the substrate using a suitable notched trowel and allow to dry partially according to the application amount, the indoor climate, the absorbency of the substrate and the type of floor covering. Do not apply more adhesive than can be laid with good transfer onto the back of the covering within the working time.
2. Install the floor covering within a short open time and ensure the adhesive ridge is pressed out. Rub in or roll over and apply weight against any flooring deformation. Ensure that air is not trapped under the covering. Allow the area to rest for 20 minutes and then roll over again and rub in at edge and seams.

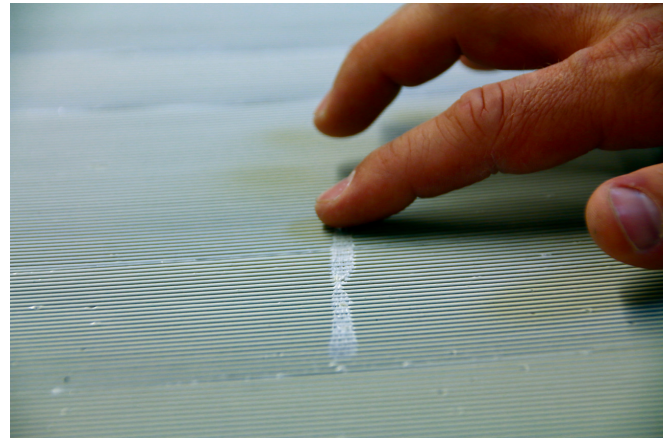
Wet Set Adhesive Method: Install the floor covering while the adhesive is still wet, roll and ensure there is no trapped air. Please note that if the floor is laid in the wet adhesive there will be no or little initial tack.

Double-Drop-Method: Install the floor covering into the wet adhesive and rub in or roll. Pull back immediately and allow the backing of floor covering and substrate to partially dry until a tack can be felt (finger test see picture below). The adhesive ridge should not be visible. Reinstall the floor covering and roll to ensure there is not trapped air.

Wall applications: Apply the adhesive with a nylon roller onto the prepared wall, spread immediately with an appropriate notched trowel and allow to tack. Apply the covering and rub over.

Contact applications: Depending on the type of covering apply the adhesive with a trowel or a roller on the back of the floor covering and on the substrate. After the adhesive dries, install floor covering and roll over.

3. Remove adhesive residues while fresh with water.



CONSUMPTION INFORMATION:

Coating/Backing	Toothing	Consumption approx.*	IMO**
Smooth, e.g. CV floor coverings	A5	180 - 200 g/m ²	yes
Smooth, e.g. LVT	A1	200 - 280 g/m ²	yes
Slightly structured, e.g. PVC, LVT, rubber	A2	250 - 320 g/m ²	yes
Structured, e.g. carpet, linoleum, soft needle punch	B1	320 - 380 g/m ²	no

*At 20 °C and 65% relative humidity with tempered adhesive buckets.
**Max. acceptable consumption for shipbuilding (IMO): 320 g/m²

CONSUMPTION:

Floor covering on levelled substrates "Wet / Semi-wet application"	Trowel notch	Waiting time*	Working time*
CV floor coverings, LVT	A5	10 - 20 minutes	15 - 25 minutes
PVC floor coverings, rubber	A2	15 - 20 minutes	20 - 40 minutes
Textile floor coverings, linoleum	B1	20 - 30 minutes	30 - 45 minutes
Needle punch	B2	10 - 20 minutes	30 - 45 minutes

Floor covering on dense substrates "Pressure sensitive application"	Trowel notch	Waiting Time*	Working Time*
PVC floor coverings, e.g. on UZIN KR 410 or dense installation underlays	A5	30 - 40 minutes	1 - 2 hours

Floor covering on dense substrates "Double drop application"	Trowel notch	Waiting time*	Working time*
Rubber on smooth, dense coatings	A5	10 minutes, remove floor covering again then 20 minutes	45 minutes

*At 20 °C and 65% relative humidity.

IMPORTANT NOTES:

- ▶ A shelf life of 12 months when stored in moderately cool conditions, in the original packaging. Frost-resistant down to -14 °C. Carefully and tightly reseal opened containers and use the contents quickly. Allow containers to come to room temperature before use.
- ▶ Best applied between 18 - 25 °C, with the floor temperature above 15 °C and relative air humidity below 65%. Low temperatures and high air humidity lengthen the working and drying time. Whilst high temperatures and low air humidity shorten the working and drying time.
- ▶ Humid substrates may cause secondary emissions and odours. Therefore, ensure the compound is dry before applying the adhesive.
- ▶ Installations onto substrates with old adhesive residues may cause interactions and lead to unpleasant odours. Ideally these should be removed completely. In all situations adhesive residues must be remedied via the use of primers and coatings of compound at least 3 mm thick.
- ▶ Before installing, the floor covering must be adequately acclimatised to the indoor climate and free from tension.
- ▶ In extreme temperatures due to exposure from light, heavy mechanical strain from pallet trucks, fork lifts, etc. or when exposed to moisture from above, a synthetic resin adhesive such as UZIN KR 430 must be used. Obtain application advice if in doubt.
- ▶ The space between several linoleum sheets should be as thick as a postcard.
- ▶ Please check the adhesive recommendations (online) or obtain application advice when installing chlorine-free floor coverings.
- ▶ When sealing, cleaning and maintaining the floor covering, products from the UZIN Care range can be used (UZIN Basic Cleaner, UZIN Turbo Protect Plus, UZIN Resilient Care, UZIN Refresher). For further information please refer to the product data sheets.
- ▶ Follow the generally acknowledged rules of the trade and technology for the installation of floor covering in respective of the applicable national standards (e.g. END, DIN, OE, SIA, etc.)

SEALS OF QUALITY & ECOLABELS:

- ▶ Solvent-free
- ▶ EMICODE EC 1 PLUS / Very low emission
- ▶ DE-UZ 113 / Environmentally friendly because of low emissions

COMPOSITION:

Polymer dispersion, preservation agents, mineral aggregates, additives and water.

PROTECTION OF THE WORKPLACE AND THE ENVIRONMENT:

Solvent-free. Use of barrier cream and ventilation of the work area are recommended. When fully dried, has a neutral odour and presents no physiological or ecological risk. Basic prerequisites for best possible indoor air quality following floor covering work are conformity to standards of

the working conditions, as well as thoroughly dry substrate, primer and smoothing compound.

DISPOSAL:

Where possible, collect product residues and re-use. Do not allow dispersal into drains, sewers or ground. Empty, scraped and drip-free containers are recyclable. Containers with liquid residue, as well as the liquid product, are classed as Special Waste. Dried product residues are classed as Construction Waste.

KEVMOR
TRADE SUPPLIES

Kevmor Trade Supplies

11 Belmont Avenue, Belmont WA 6104

P: 08 9277 7177

E: sales@kevmor.com.au