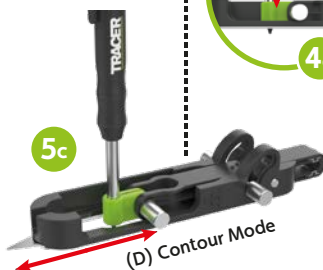
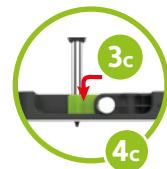
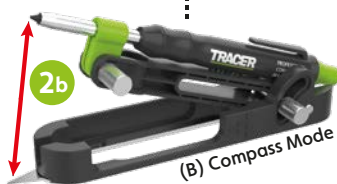
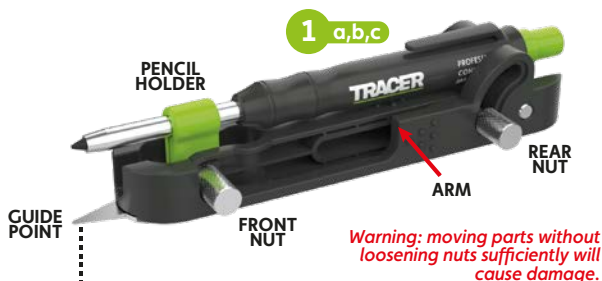


SETUP GUIDE (HOW TO OVERLEAF)

► **TIP 1: FRONT NUT** The pencil holder operates on a ratchet style mechanism with 16 fixed positions, when loosened sufficiently the pencil should click between set positions.

► **TIP 2: REAR NUT** Loosen the nut just enough so that parts can move freely but there is still enough friction to support it's own weight. This will make fine adjustments much easier.



SCAN HERE

(A) Quick Parallel Mode (1-20mm)

1a. In the closed position (1) the ProScribe is ready to perform 20mm offset scribes. If required, loosen the front nut and fit pencil.

2a. For a quick, closer offset, rotate the pencil holder into one of the set ratchet positions and adjust the pencil/lead height as required to achieve a closer offset before tightening all nuts. For more precise control or for offsets larger than 20mm use mode (C).

(B) Compass Mode

1b. Loosen the front nut and fit pencil if required.

2b. Loosen rear nut and raise arm to set required offset distance before tightening all nuts.

(C) 1-100mm Parallel Mode

Follow steps 1&2 of the Compass mode.

3b. Loosen front nut and adjust the pencil angle and height as required before retightening. The pencil lead can also be extended as required.

(D) Contour Mode

1c. Loosen front nut and fit pencil if required.

2c. Loosen rear nut, then push backwards on the front nut to unclip and slide the arm from the fixed pivot point.

3c. Rotate pencil holder 90 degrees.

4c. Adjust the pencil height so that the lead is below the base plate before tightening the front nut.

5c. Slide the arm to set desired offset distance before tightening rear nuts.



HOW TO (SETUP OVERLEAF)

Warning: Do not apply excessive force through the guide point, this may cause damage to the surface being marked against.

► Parallel Scribing

1. Adjust the pencil position as per the Setup Guide overleaf to the required offset distance, ensuring the offset distance meets/exceeds the largest gap between the surface being marked, and the guide surface.
2. While Ensuring the guide point face remains in contact with the guide surface, press the pencil lead against the surface to be marked and move the tool laterally to begin marking.

Note: depending on the application the top or bottom face of the guide point can be used.

► Profile Scribing (Contour)

1. Adjust the pencil position as per the Setup Guide overleaf ensuring the offset distance meets/exceeds the largest gap between the guide surface and marking surface.
2. While ensuring the guide point is lightly pressed against the guide surface, move the tool laterally to begin marking.

Note: To maintain accurate scribing the tool must be perpendicular (90 degrees) to the guide surface at all times!

For profiles that are deeper than the guide point, or where longer straight scribing is required the parallel mode may be preferred.

► Compass

1. Adjust the pencil position as per the Setup Guide overleaf to match the radius requirement.
2. While ensuring light pressure is applied to the guide point, rotate to tool to start a marking.

Note: When setting the tool to mark a hole, remember to halve the hole diameter to calculate the tool offset distance/radius to ensure the hole is the correct size.